

See-Through View

"TRANSPARENCY," a glass-focused group show, opens at Elder Gallery of Contemporary Art in Charlotte, N.C., on January 11 and runs through March 9. The exhibition, as its name suggests, showcases how artists working in glass use materials and forms to investigate transparency. It features work by David Patchen, Alex Bernstein, Brent Skid-

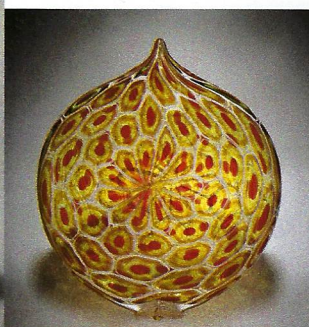
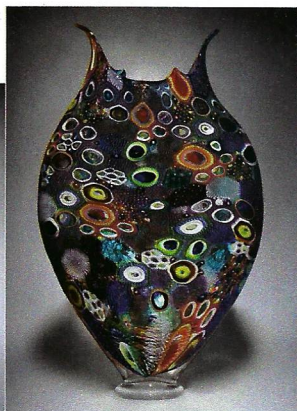
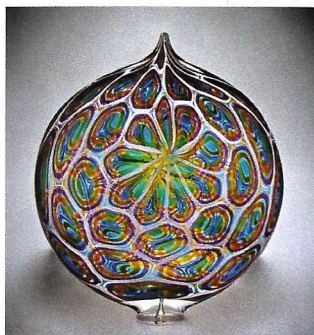
more, Mark Leputa, Linda Luise Brown, and Chris Watts.

Patchen, a New York-born, San Francisco-based artist and designer, marries a unique American style of glassmaking with Italian techniques. The result is an intricate mixture of cane and murrine that creates

dense color of pattern. While Patchen's solo works will be on view in the exhibition, so will his first-time collaborations with New Hampshire-based artist Toland Sands, which mingles their processes and styles. Patchen creates patterns in molten glass in the hot shop and combines them

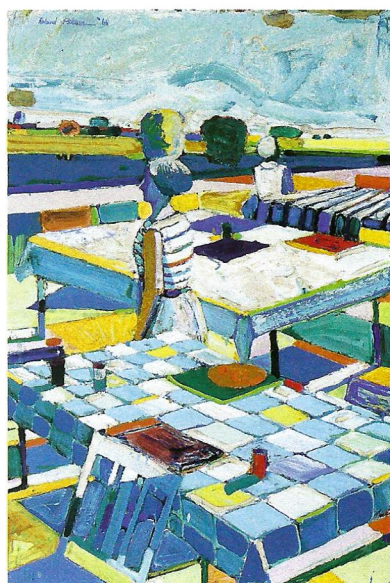
with Sand's cold-construction glass sculpture technique, which uses optical crystal and dichroic glass. Replete with detail and color, their collaborative works play with transparency, simultaneously reflecting and refracting light.

Patchen's collaborations with Mark Leputa, an Alabama-based artist, are also part of the show. Each of the duo's works feature hidden, interior "secrets" in the form of Patchen's intricate thread-pattern murrine. Transparent portals allow viewers to see the murrine, which is revealed by Leputa's deliberate, meticulous carving, lensing, and polishing.



CUP OF TEA

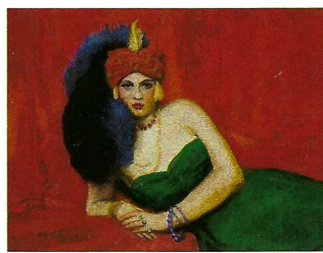
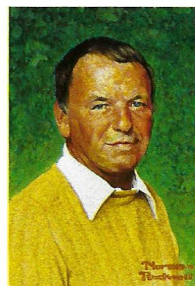
ON DECEMBER 8, Michaan's Auctions of Alameda, Calif., is holding a Gallery Auction that will be highlighted by *Tea for Two* (est. \$25,000–30,000), an oil on canvas by Roland Petersen, a Danish-born member of the San Francisco Bay Area Figurative Movement. The painting, one of Petersen's



"Picnic" series, for which he is best known, is a sunny scene with bold patches of light and shadow—both of which are rendered in shades of blue. The Fine Arts session of the sale will have strong offerings of 20th-century American art, including works by Helen Lundeborg, Ida Rittenberg Kohlmeyer, Bay Area Funk Artist Roy De Forest, Peter Max, Andy Warhol, and Roy Lichtenstein, among others.

Luck Be a Lady

START SPREADIN' the news: this month Sotheby's will hold live and online auctions of the estate of Barbara Sinatra, the philanthropist and fourth and final wife of Frank Sinatra, who died last July. "Lady Blue Eyes: Property of Barbara and Frank Sinatra" will be held online through December 7 and live on December 6 in New York. Pieces



from Barbara's own collection of jewelry and accessories will also be sold at the Magnificent Jewels sale in New York on December 4.

Highlights include Walt Kuhn's 1938 oil on canvas *Girl with Turban (Zuleika)* (est. \$300,000–500,000) and *Sinatra: An American Classic*, a 1973 portrait of Frank Sinatra by Norman Rockwell (est. \$80,000–120,000).

A revised final script for *Ocean's 11* (1960) that was put in a presentation binding for Frank Sinatra is estimated at \$10,000–15,000. There's also a playful Dodie Thayer lettuce-ware service (est. \$70,000) and an eye-popping 20.60 carat diamond ring (est. \$1–1.5 million) that is nothing but serious.